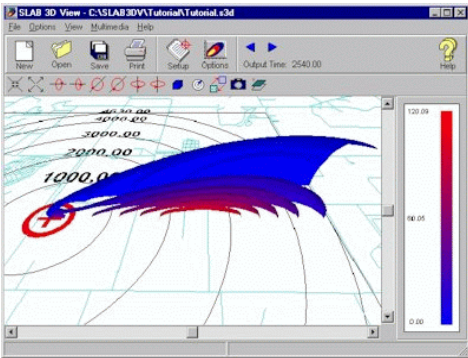
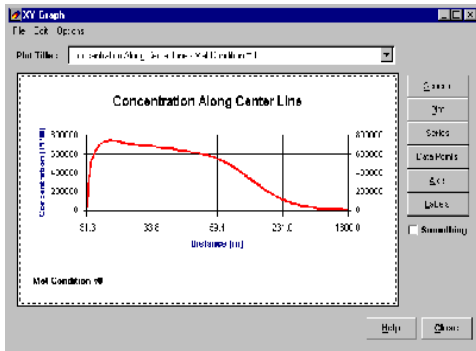




Project Profile

Ammonia Dispersion Modelling

Chemical Manufacturing Plant, Central Canada



The SLAB heavy gas model was used to assist a client in estimating exposure to ammonia, during a regularly scheduled maintenance period on a tower located downwind from a low level stack. The stack periodically released various quantities of ammonia during venting operations. The client's primary concern was the employee's exposure level to the ammonia at various floors on the tower during maintenance activities.

The concentrations were estimated by the SLAB model under various different emission rates, emission durations and meteorological conditions and compared to the Short-Term Exposure Level (STEL) for ammonia, to determine if the exposure levels were a health risk.

Services: computer modelling, data compilation and evaluation.

